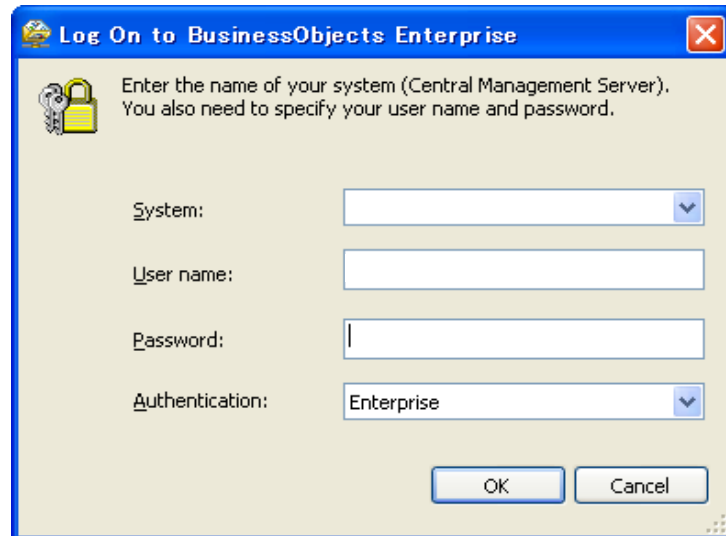
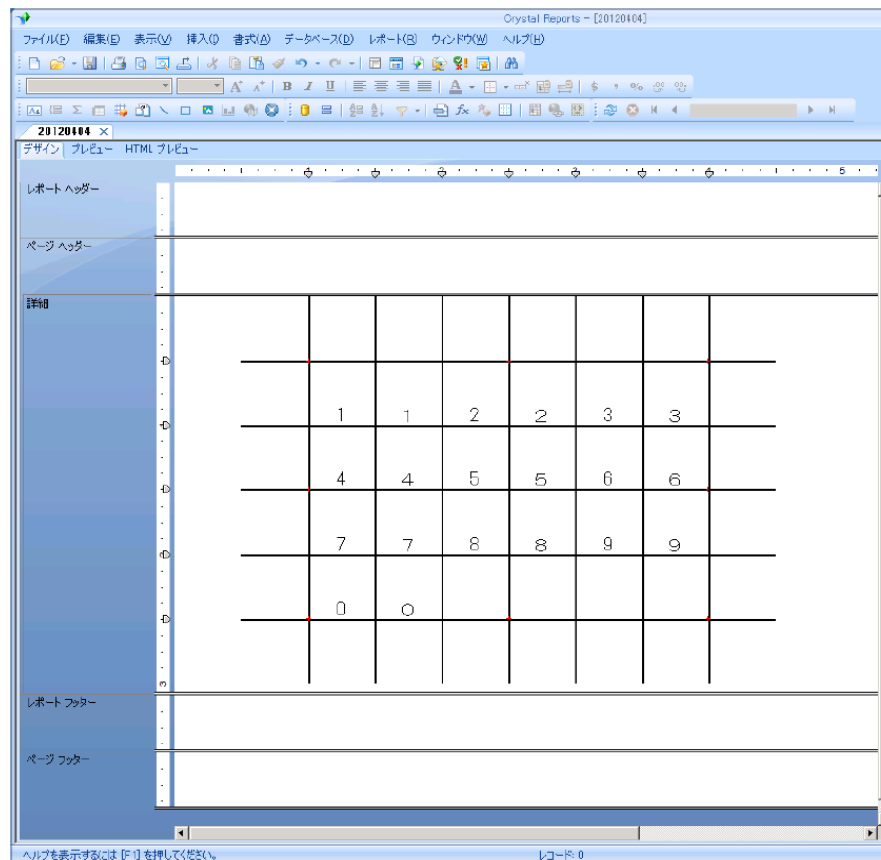


## The Contents of Problem

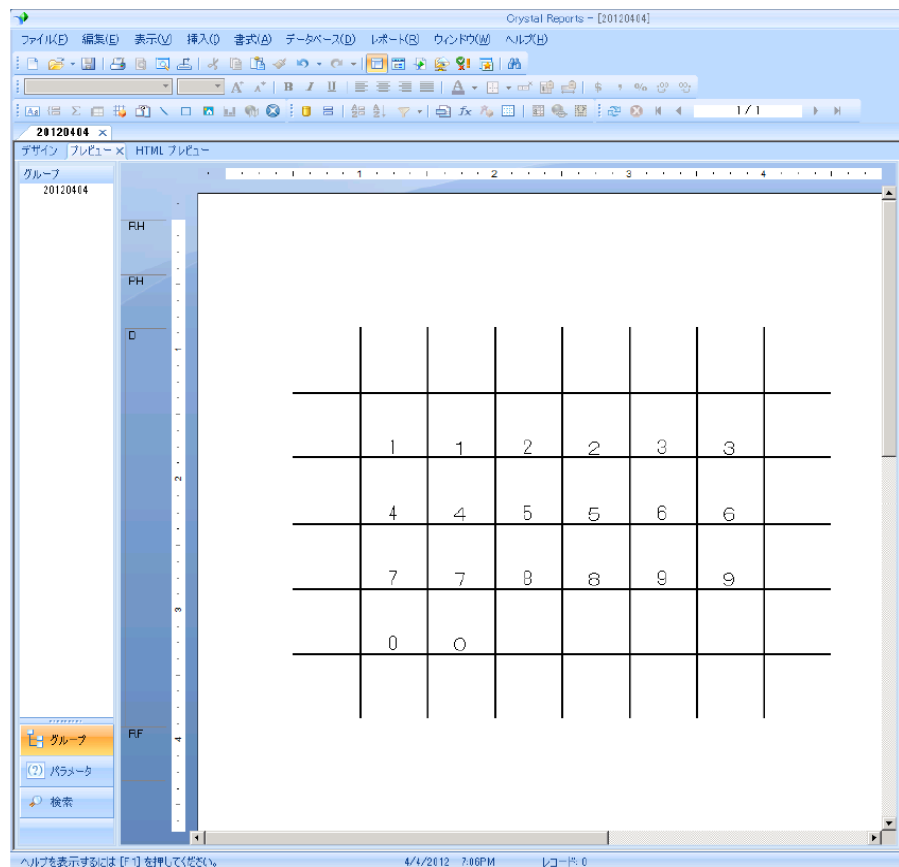
- 1) Select [Open] from [File] menu on toolbar
- 2) Select [Enterprise] on Open file dialog



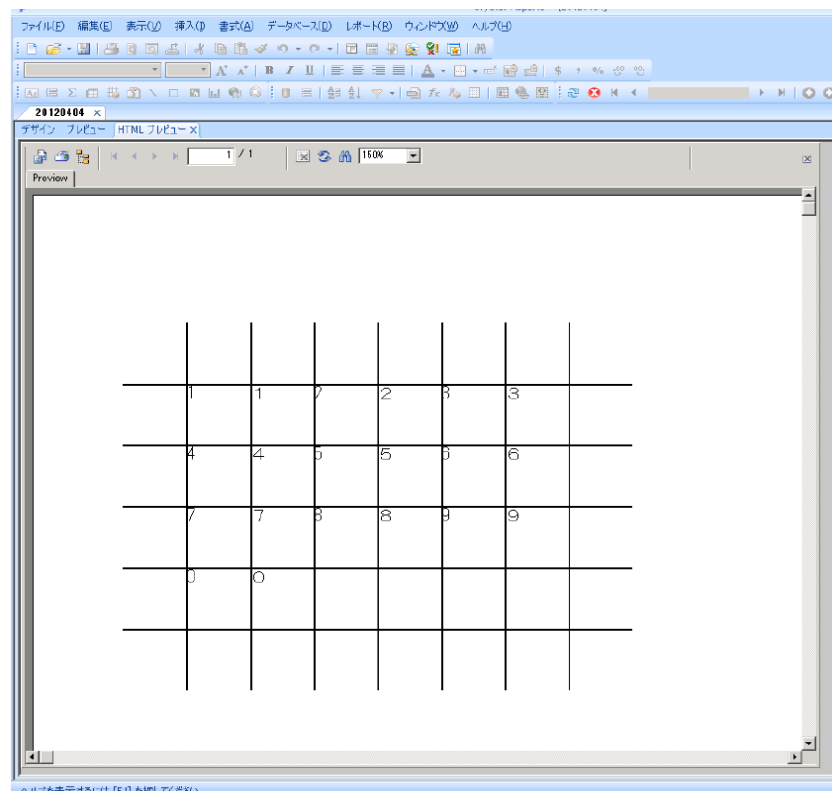
- 3) Make RPT file



- 4) Select [View]-[Preview Sample]



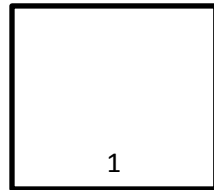
5) Select [View]--[HTML Preview]



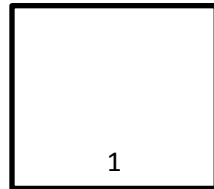
The Contents of Problem

[HTMLPreview] font position is different from [Preview Sample] font position.  
[HTMLPreview] font position is different from [Design] font position.

[Desing] .rpt file



[View]–[Preview Sample]



[View]–[HTMLPreview Sample]

