

# Fiddler tutorial

This tutorial shows the process of capturing network traffic using the Fiddler tool.

## 1 - Requirements

Fiddler runs only on Windows

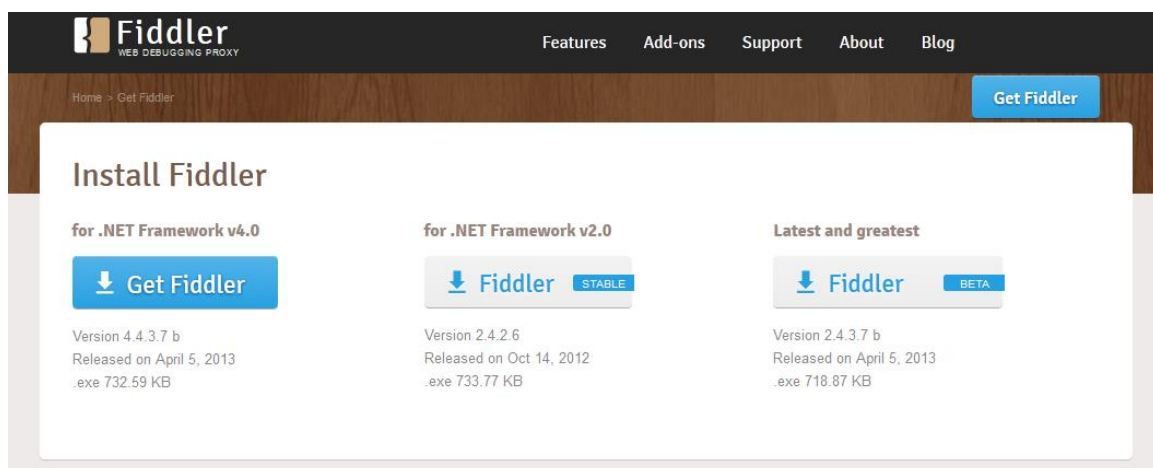
You need to have .NET Framework installed, if not, you can download it on Microsoft website

<http://www.microsoft.com/en-ie/download/details.aspx?id=17851>

## 2 - Download Fiddler

From <http://fiddler2.com/get-fiddler>

(The one supported by your .NET version)

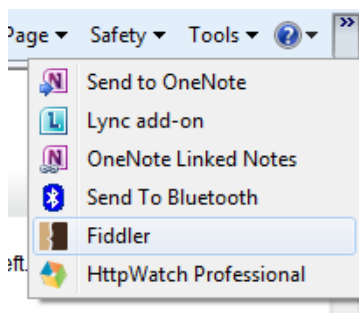


## 3 - Start Fiddler

-From Start menu -> Fiddler2

Or

-From Internet Explorer -> Chevron (>>)->Fiddler

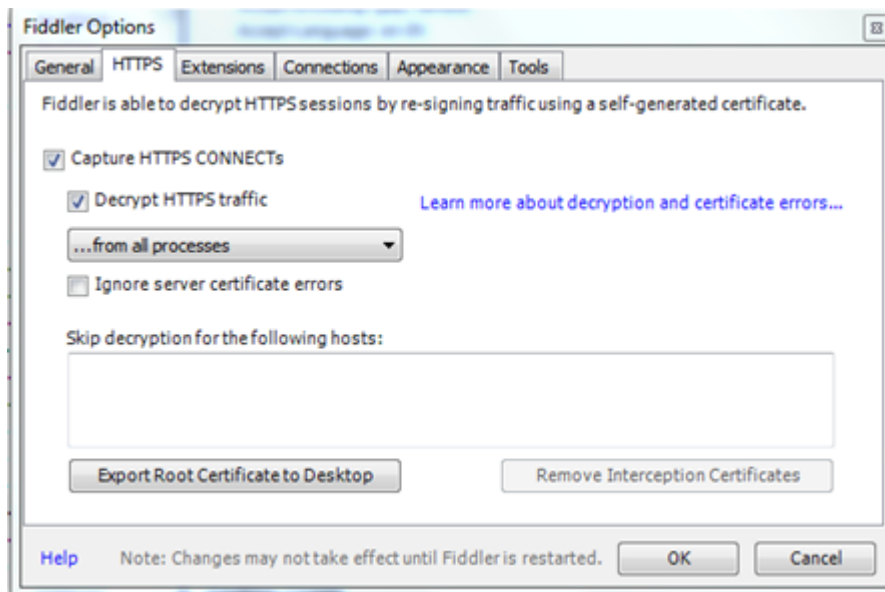


## 4 - Configure Fiddler

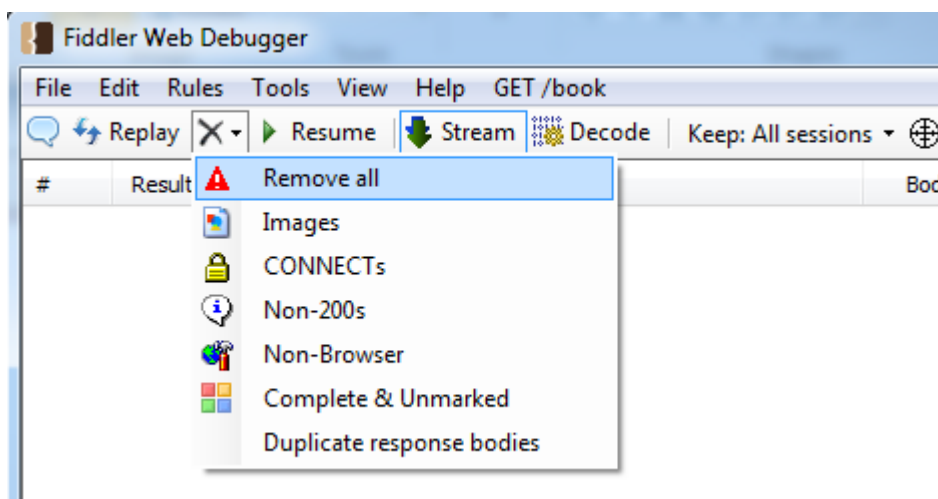
We need to **enable HTTPS traffic**:

-In Tools -> Fiddler Options

-Check 'Capture HTTPS CONNECTs' and 'Decrypt HTTPS traffic'



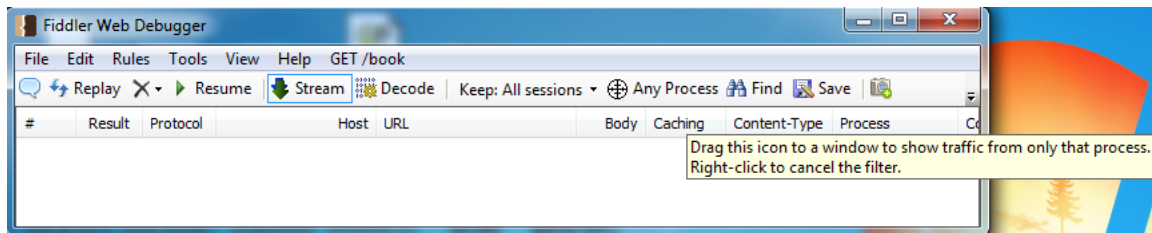
Clear original traces by pressing 'Remove all'.



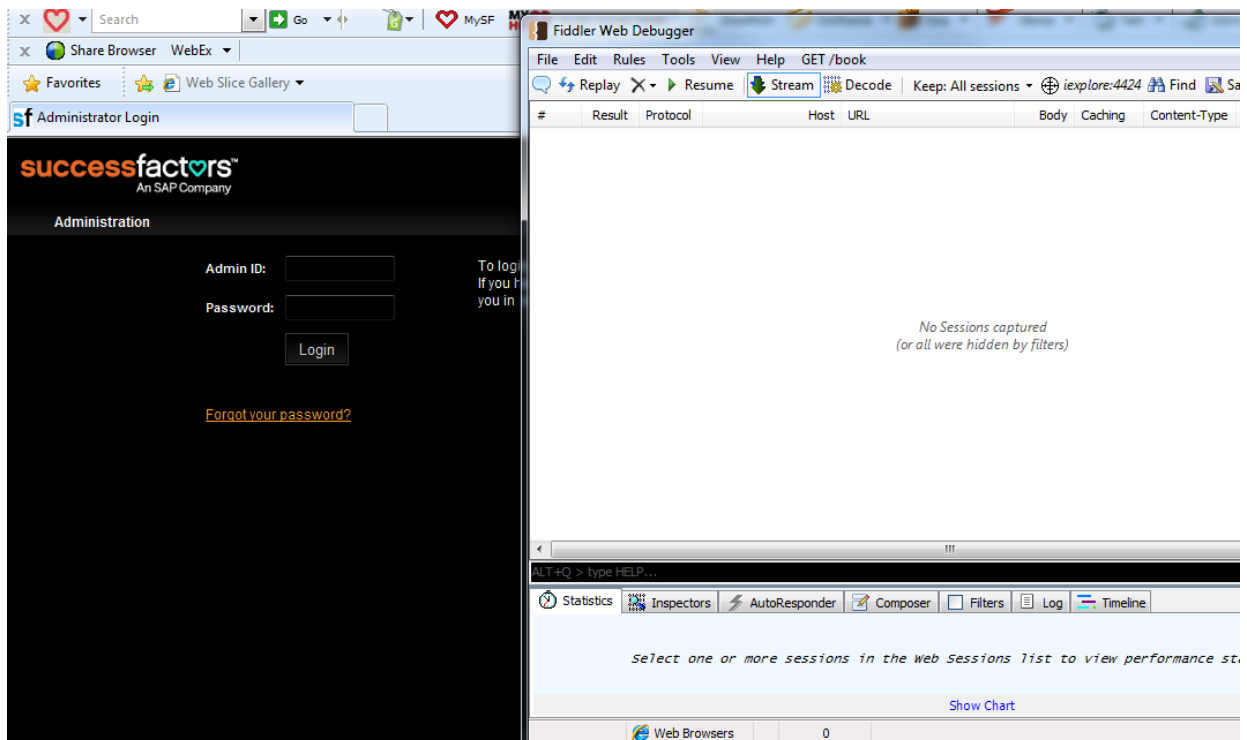
**Target the right process**

If you using LMS in Internet Explorer, Fiddler has to capture traces from the IE process, to do it:

-in the tool bar press 'Any Process' , it will show 'pick target' and cursor will become a cross.



- Drag the cursor to your LMS session in IE (colour will change), 'pick target' will get the name of the process (for ex: iexplorer: 4424 )

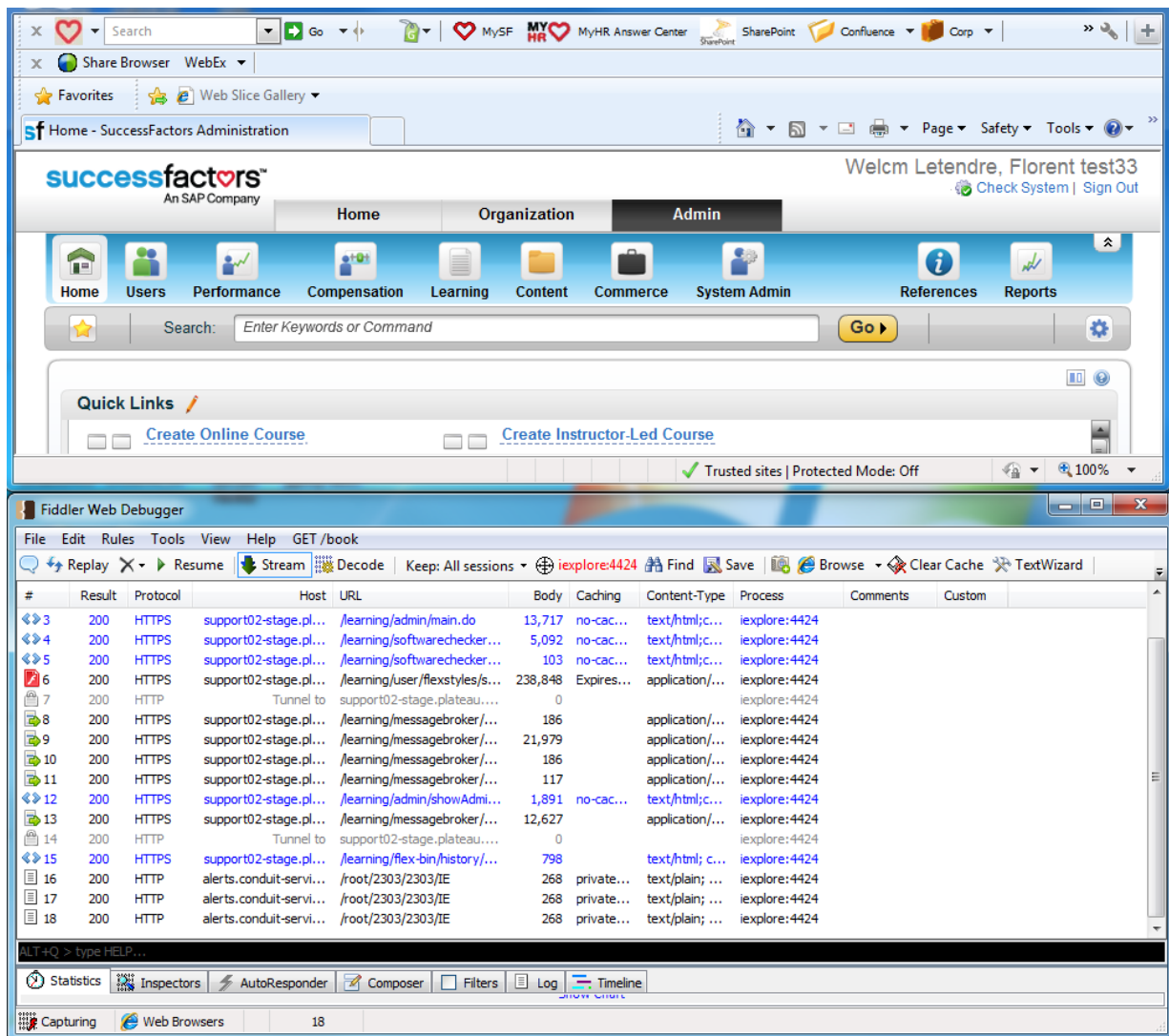


## 4 - Capture traces

Make sure **capture Traffic is enable** (F12 or File menu->Capture Traffic), you will see 'Capturing' in bottom left of Fiddler window.

-**Reproduce your issue** (ex : login to LMS)

-You should see traces populating the Fiddler pane:



**Stop traces** (by pressing F12), 'Capturing' will disappear.

## 5 - Save

Save traces by pressing 'Save' button, it will save them in a .saz file.

## 6 - Send

To send the traces to SuccessFactors support, simply attach the **.saz** file to your CRM case.  
Thanks for your cooperation!