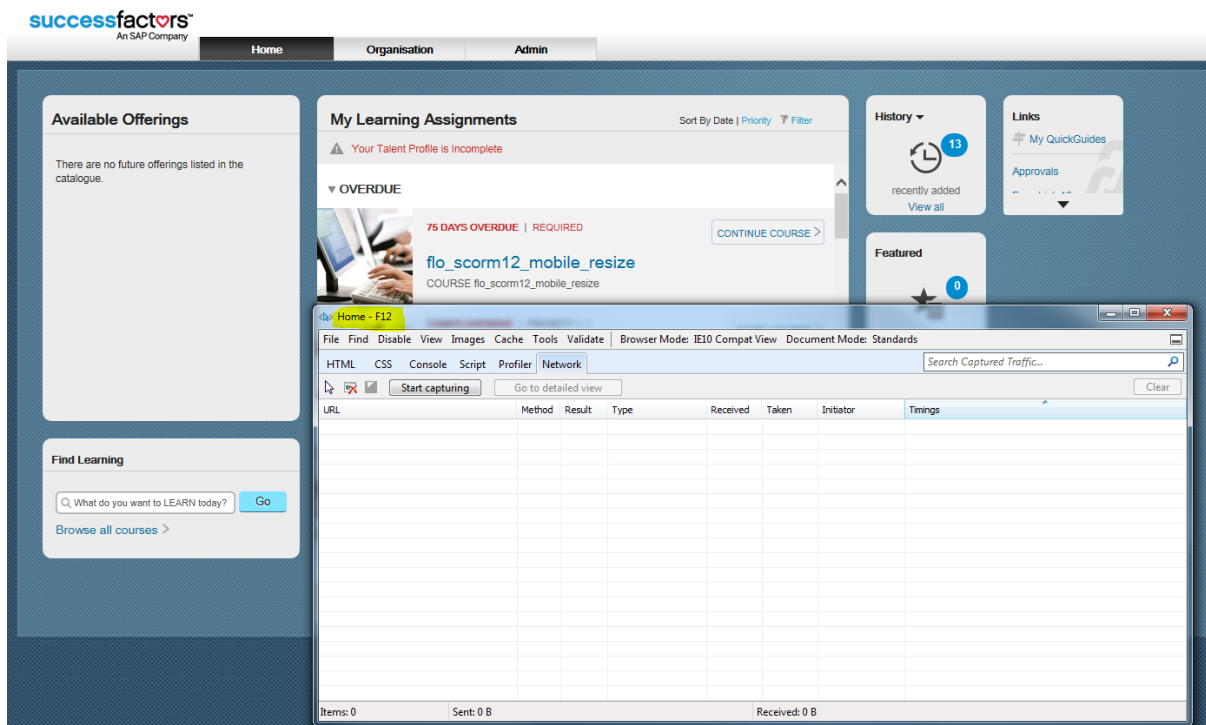
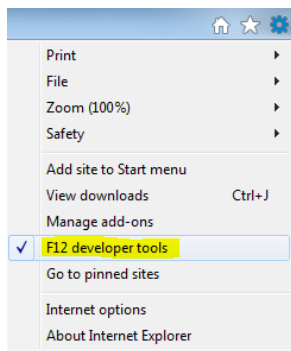


# Capture Network traces with IE Developer Tools

This tutorial shows how to collect network traces with **IE9/IE10/IE11** Developer Tools, no needs to install any additional software.

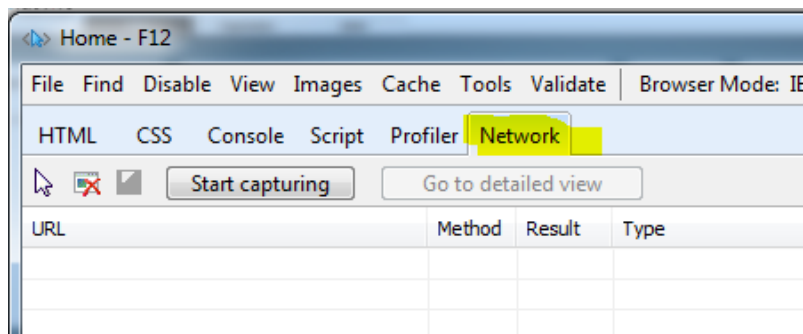
## 1. Open IE Developer Tools

When you are on the Learning Plan, on your keyboard, press **F12** (or Tools->F12Developer Tools ). It opens a new window 'Home F12', Go on Network tab



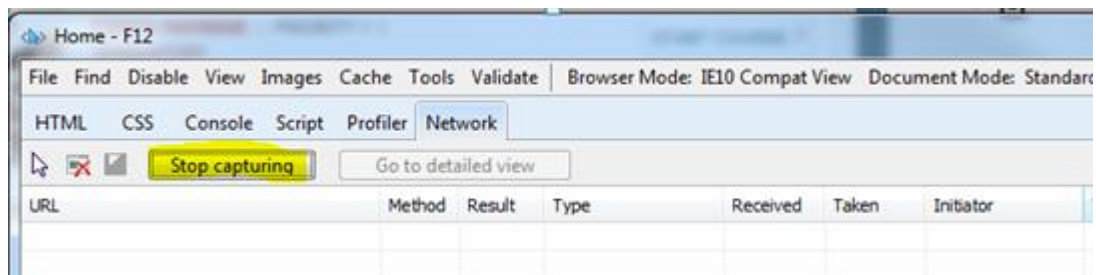
## 2. Access Network section

Click on Network tab, you should see 'Start capturing button' with clear table.



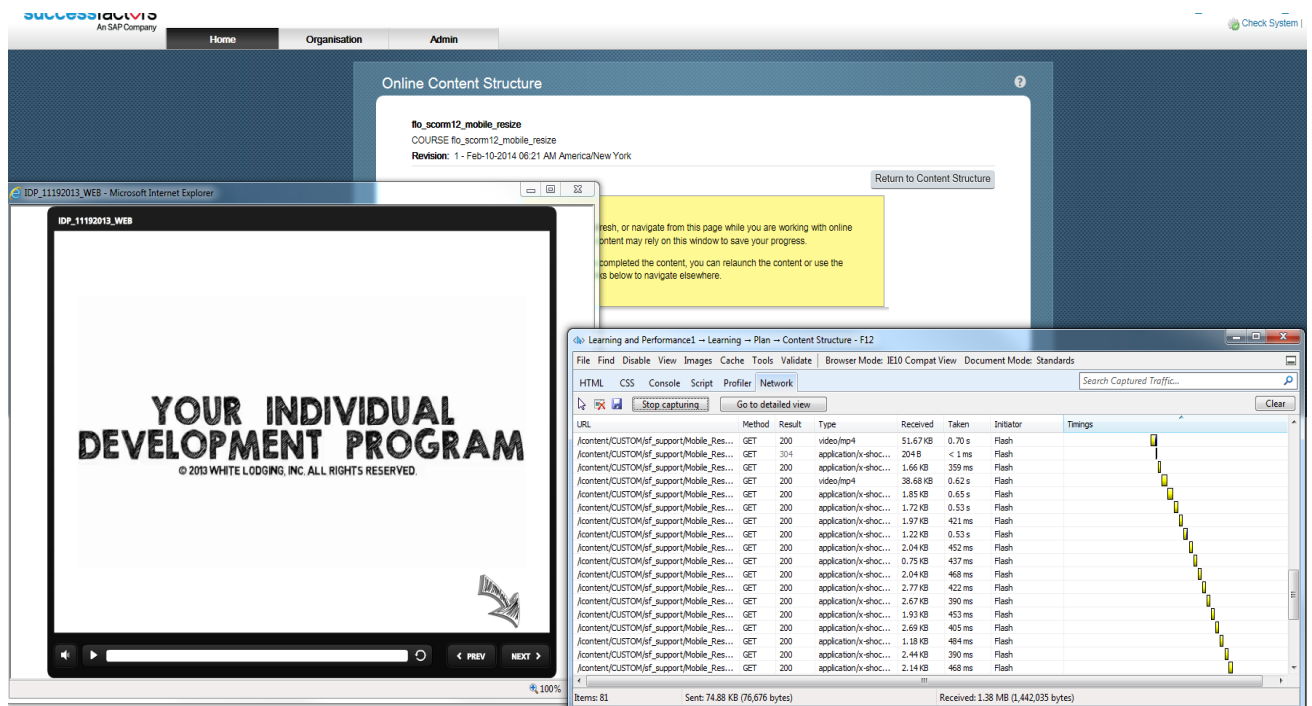
## 3. Start Capturing before replicating the issue

Click 'Start capturing' (button switches then to 'Stop Capturing')



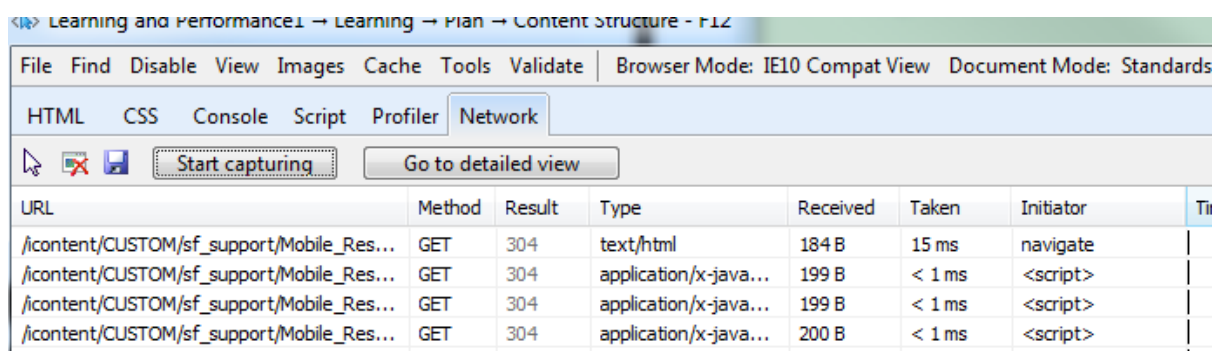
## 4. Replicate the issue

Replicate the issue (ex: course completion problems, course freezes, timeout issues...), the table should be populated by traces.



## 5. Stop capturing

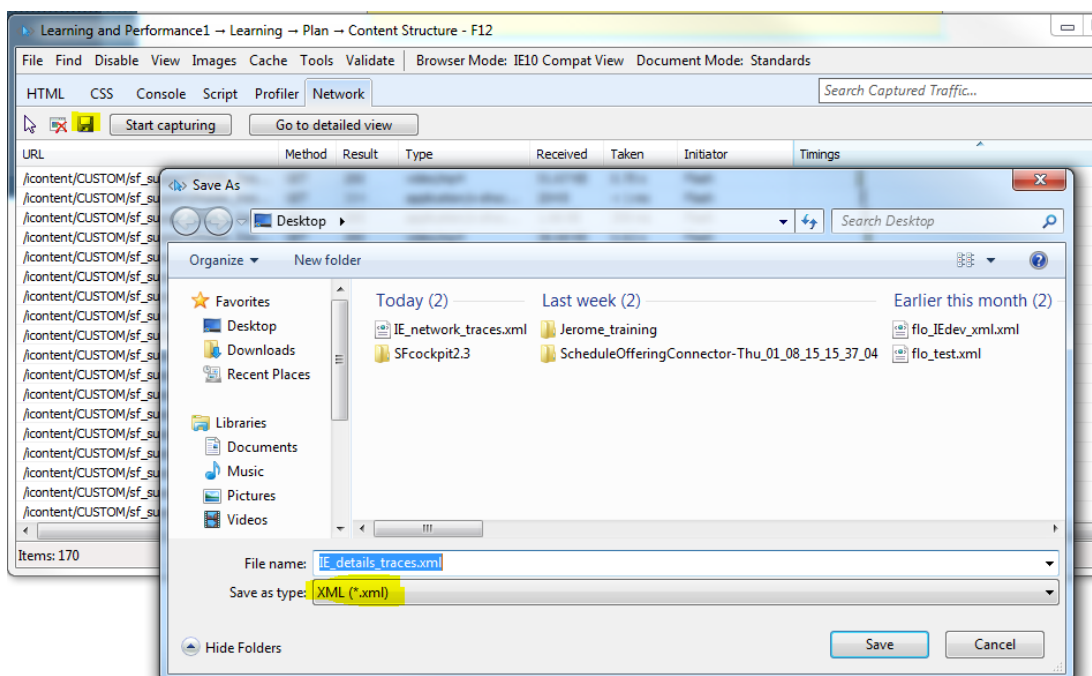
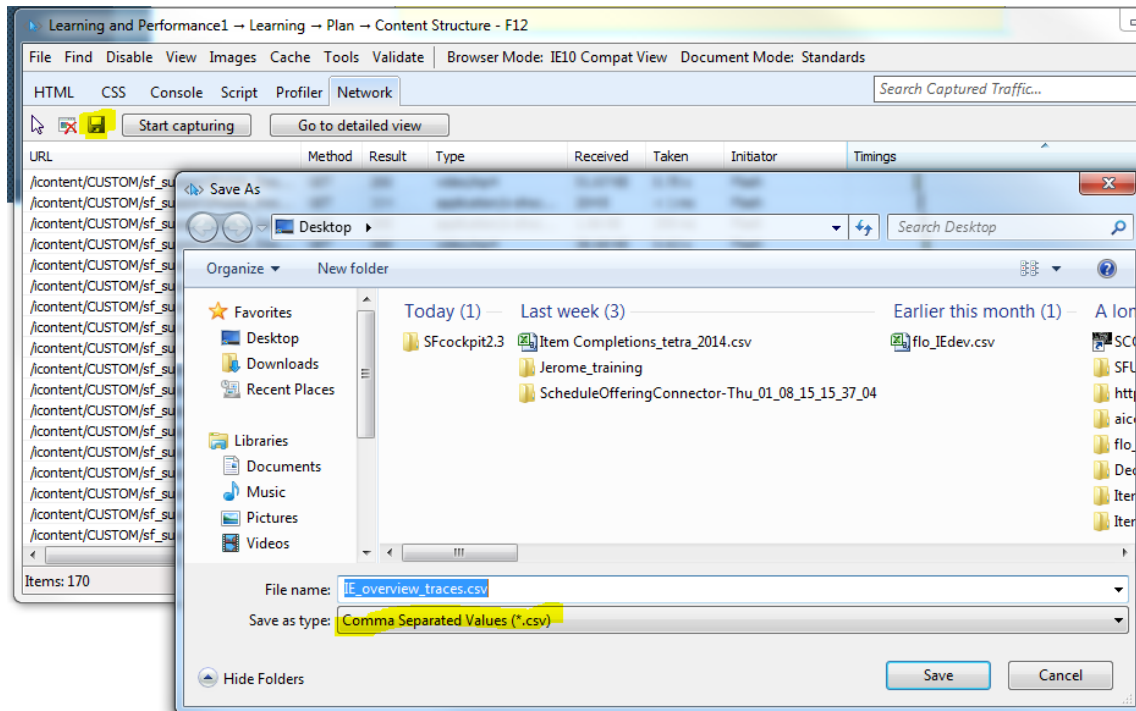
Once you finished to replicate the issue, click 'Stop capturing' (the button switches back to 'Start capturing').



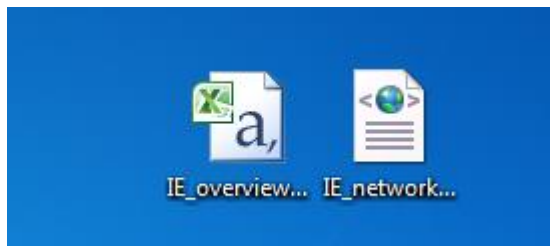
## 6. Export traces

Click on the purple floppy disc icon, and **export 2 Files**:

- The **csv** file to save the traces overview
- The **xml** files to save the traces detailed view



## 7. Attach the 2 files in the case



Thanks for your cooperation!