

Define Alternative Calculation for Condition Amount in Document Condition

Sales in SAP S/4HANA Cloud 1811
November 2018

CUSTOMER

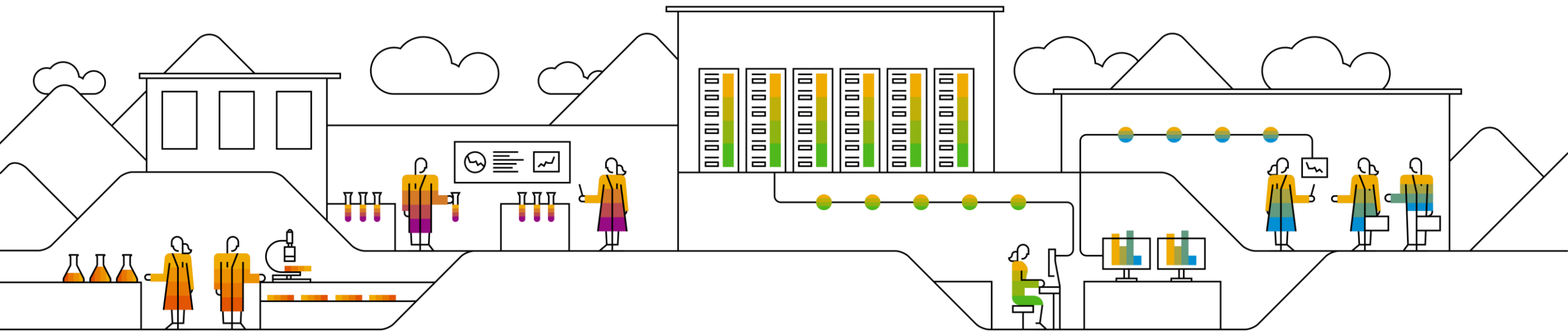
Objectives



After completing this learning module, you will know:

- The function provided with the alternative calculation for the condition amount in a document condition
- How to set up the custom logic for the alternative calculation of the condition amount
- How to set the condition formula for the alternative calculation of the condition amount
- How to assign the condition formula in a pricing procedure step
- How to set up the pricing procedure determination

The Function



The Function

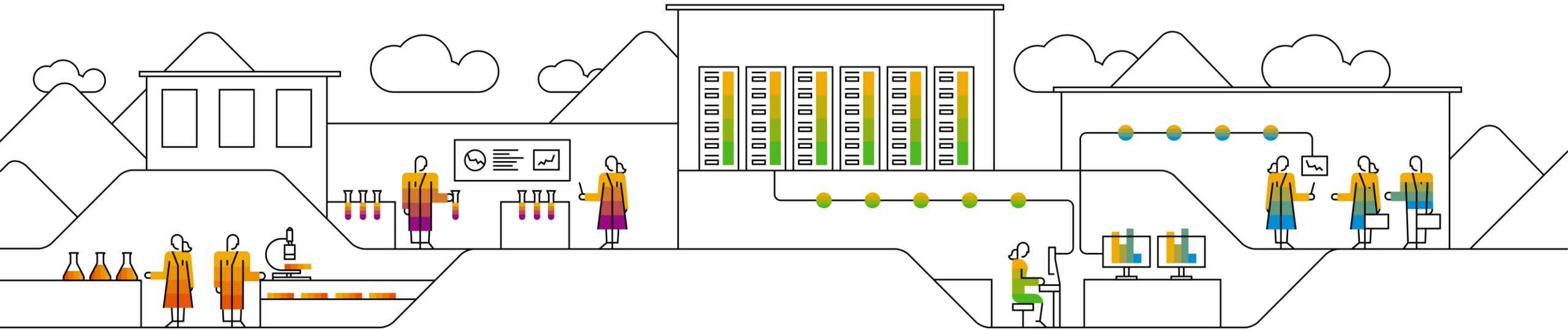


Allows you to alter the calculation of the condition amount of a group condition type in pricing with the following details:

- Supports you if the SAP delivered calculation types do not match your business requirements
- You can override the SAP standard ways to calculate the condition amount
- You can set up custom logic for alternative calculation of the condition amount
- You can reuse your custom logic for different condition types in pricing procedures

For example, you want to implement a specific rounding logic for a group condition type in a given pricing procedure.

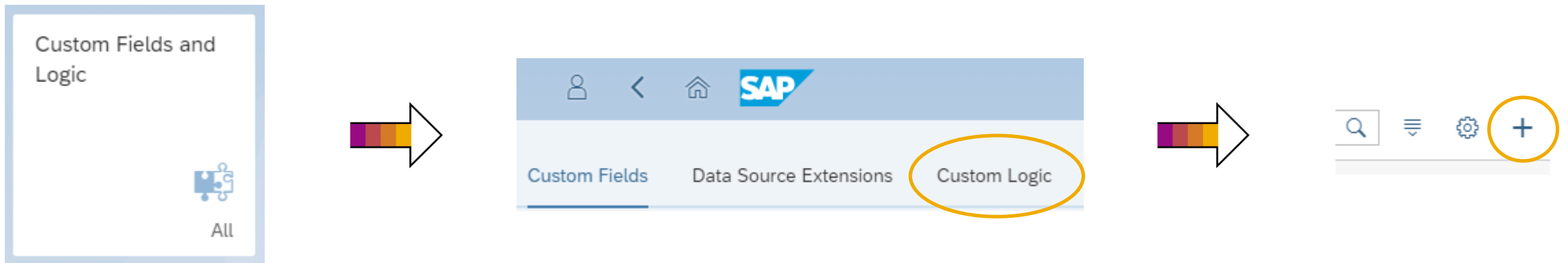
Set Up Custom Logic



Set Up Custom Logic I

Start the extensibility by opening the *Custom Fields and Logic* app:

- Navigate to the *Custom Logic* tab
- Choose the create option ('+') on the right hand side of the screen



Set Up Custom Logic II

Create a new enhancement implementation:

- Business Context
 - Pricing
- BAdI Description
 - Define Alternative Calculation for Condition Amount in Document Condition
- Implementation Description
 - <Provide an implementation description>
- Implementation ID
 - this is defaulted, but can be overwritten

New Enhancement Implementation

Business Context:
Pricing

*BAdI Description:
Define Alternative Calculation for Condition Amount in Docu...

*Implementation Description:
My Implementation Description

*Implementation ID:
YY1_ MYIMPLEMENTATION

Create Cancel

Set Up Custom Logic III

Draft, test, and publish the enhancement implementation

My Implementation Description

Last Changed By ADMINISTRATOR John, 7/13/2018, 6:51:39 AM

Not Published
Draft Available

Available Fields Filter BAdI Documentation

Draft Filter

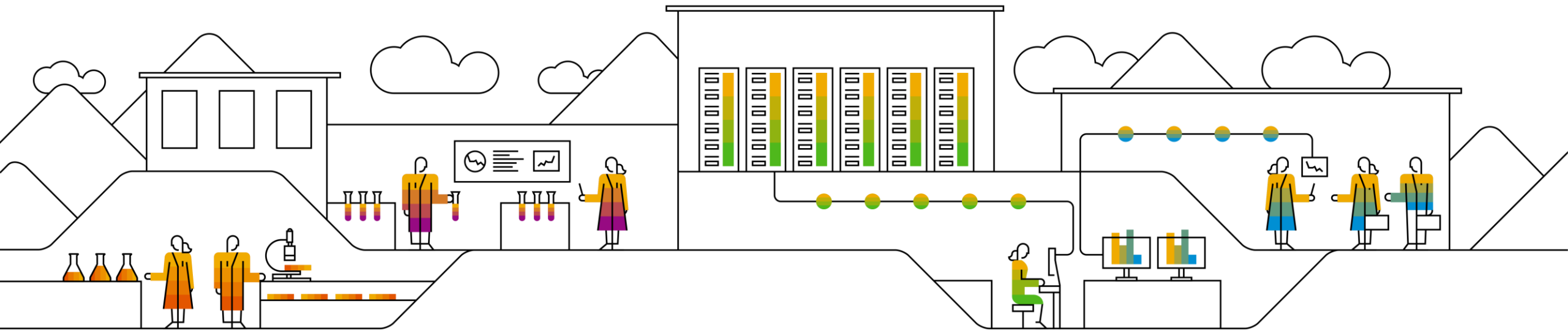
formula = MYFILTERID

Draft Logic

```
1 Mandatory step for all implementations:
2 Move the importing parameters to the changing parameters.
3 MOVE-CORRESPONDING prcg_element_attributes TO prcg_element_result_amounts.
4 General remark:
5 The enhancement ID that you assign to a routine number must correspond to the BAdI filter of the current implementation.
6 In the configuration of a pricing procedure, you assign the routine number to a condition type or to a sub-total line.
7
8 In the following, an example implementation of a condition amount routine for the condition header is presented.
9 Such type of routine can be used to change the value for a pricing element.
10
11 The example implementation below will do the centime-rounding if the currency is Swiss francs.
12 Additionally, a custom message will be raised.
13 TRY.
14 IF doc_attributes-transactioncurrency = 'CHF'.
15   prcg_element_result_amounts-conditionamount = prcg_element_result_amounts-conditionamount * 20.
16   prcg_element_result_amounts-conditionamount = |{ round( val = prcg_element_result_amounts-conditionamount
17     | dec = 0 ) }|.
18   prcg_element_result_amounts-conditionamount = prcg_element_result_amounts-conditionamount / 20.
19 ENDIF.
20 pricing_message = 'This is a BAdI example implementation for a group condition' ##NO_TEXT.
21 CATCH cx_sy_conversion_error cx_sy_arithmetic_error INTO DATA(lx_conversion).
22 prcg_element_result_amounts-conditioninactive-reason = 'X'.
23 prcg_element_result_amounts-conditionamount = 0.
```

Save Draft Delete Test Publish

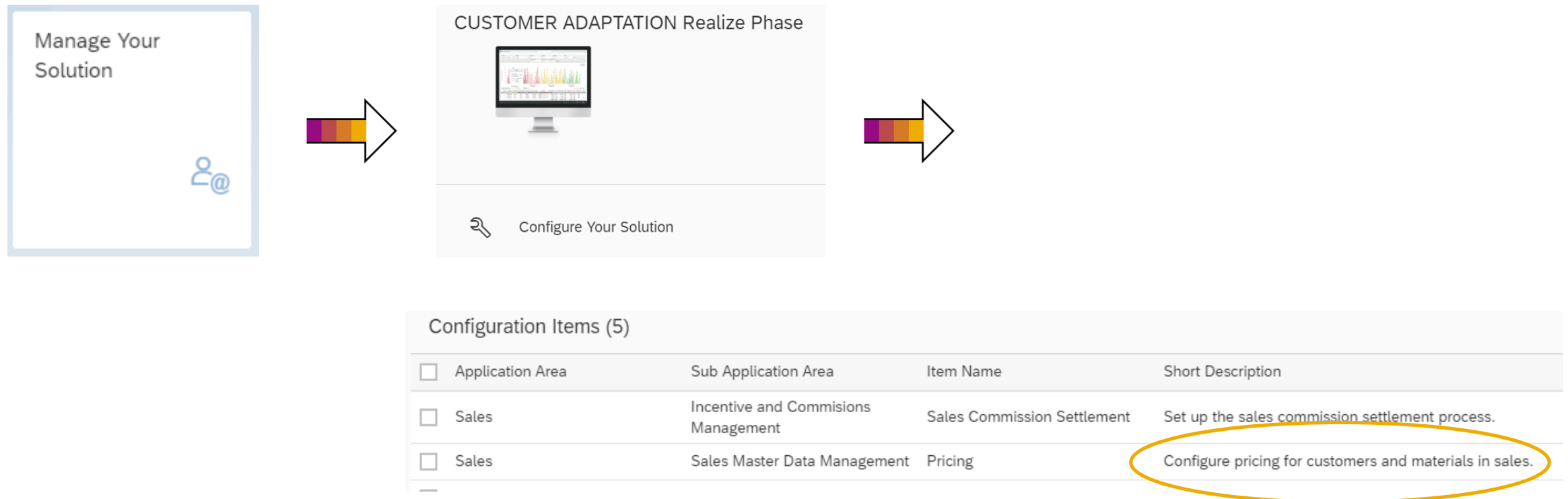
Set Condition Formula for Alternative Calculation of Condition Amount



Set Condition Formula for Alternative Calculation of Condition Amount I

Start the *Manage Your Solution* app:

- Navigate to *Configure Your Solution*
- Choose the configuration item *Configure pricing for customers and materials in sales*



Set Condition Formula for Alternative Calculation of Condition Amount II

Choose configuration step *Set Condition Formula for Alternative Calculation of Condition Amount*.

- Create a new entry for *Registration of a Routine Number*
- In the *Process Enhancement Option* field, select *Condition Amount*
- Assign a routine number from 3000000 to 3009999
- Create a new entry within *Assign Enhancement IDs to a Routine Number*
 - As a *Process Enhancement Option Task* choose *DOCUMENT_CONDITION_AMOUNT*
 - You need to assign the filter value of the enhancement implementation as an identifier for your enhancement

The screenshot shows the SAP configuration interface for 'Assign Enhancement IDs to a Routine Number'. On the left, the 'Dialog Structure' pane shows a tree with 'Registration of a Routine Number' expanded, and 'Assign Enhancement IDs to a Routine Number' selected. The main area contains the following fields:

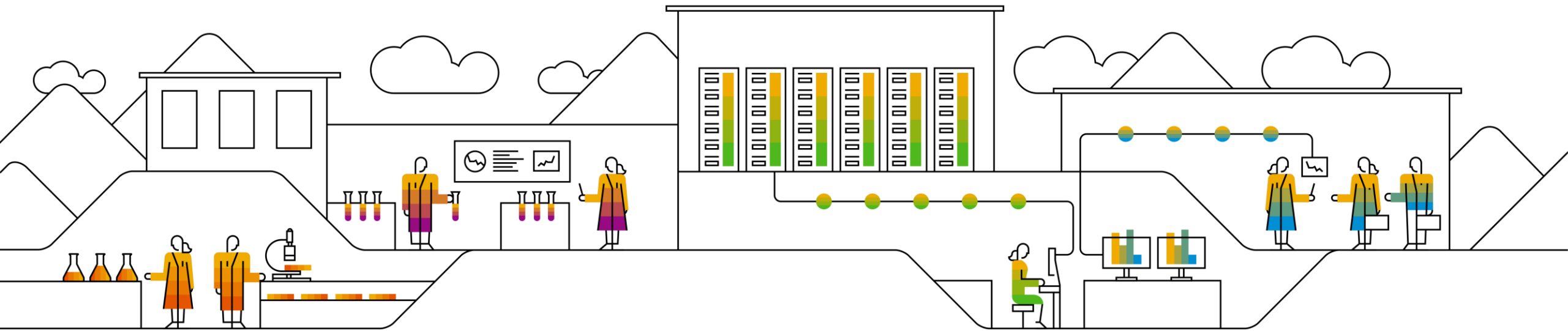
- Process Enh. Option:
- Routine Number:

Below these fields is a table titled 'Assign Enhancement IDs to a Routine Number'.

Process Enhancement Option Task	Description	Implementation Type	Enhancement Identifier
<input type="checkbox"/> DOCUMENT_CONDITION_AMOUNT		Business Add-In (BAI)	<input type="text" value="MYFILTERID"/>

The 'Enhancement Identifier' column is circled in yellow, highlighting the value 'MYFILTERID'.

Assign Condition Formula to a Pricing Procedure Step



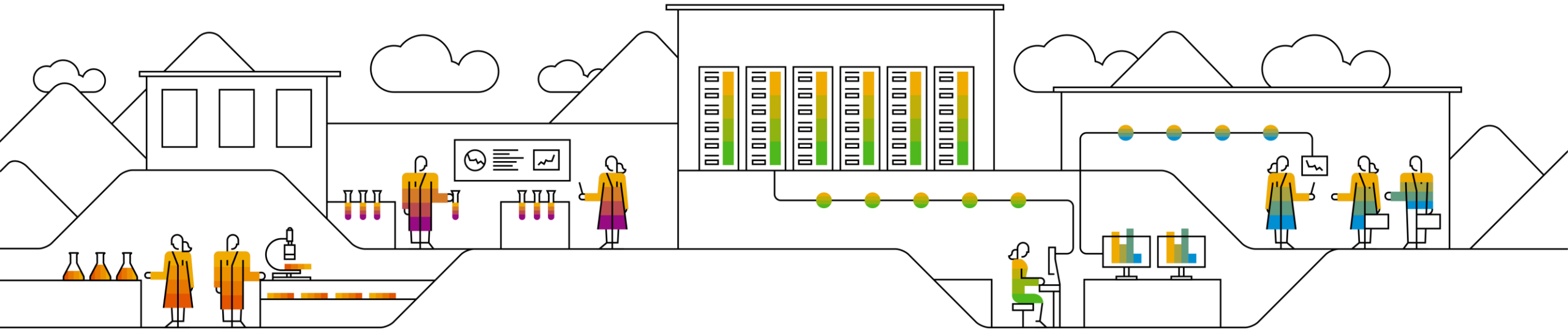
Assign Condition Formula to a Pricing Procedure Step

In the *Manage Your Solution* app, choose *Configure Your Solution*. Within configuration item *Configure pricing for customers and materials in sales*:

- Navigate to *Set Pricing Procedures*
- Copy a SAP standard pricing procedure to your custom pricing procedure
- In pricing procedure step, assign the formula to the *Alt. Calculation Type* field

Step	Cou...	Con...	Description	From ...	To Step	Man...	Re...	Stati...	Rele...	Print Type	Subtotal	Require...	Alt. Calcul...	Alt. Cond...	Account ...	Accruals
10	0	PC01	Actual Costs			<input checked="" type="checkbox"/>					8	2			ERL	
20	0	PPR0	Price			<input checked="" type="checkbox"/>						2			ERL	
60	0	PMP0	Manual Price			<input checked="" type="checkbox"/>						2			ERL	
100	0		Gross Amount			<input checked="" type="checkbox"/>				a	1		2			
120	0	DPG1	Cust. Grp / Material			<input checked="" type="checkbox"/>				a		2			ERS	
130	0	DCM1	Customer/Material			<input checked="" type="checkbox"/>				a		2			ERS	
140	0	DC01	Division / Customer			<input checked="" type="checkbox"/>				a		2			ERS	
150	0	DM01	Material			<input checked="" type="checkbox"/>				a		2			ERS	
160	0	DPG2	Customer Price Group			<input checked="" type="checkbox"/>				a		2			ERS	
170	0	DPG3	Material Price Group			<input checked="" type="checkbox"/>				a		2			ERS	
180	0	DPG4	Customer/Mat.Pr.Grp			<input checked="" type="checkbox"/>				a		2			ERS	
190	0	DPG5	Cust. Grp/Mat.Pr.Grp			<input checked="" type="checkbox"/>				a		2			ERS	
200	0	DRG1	% Gross Amount 1	100		<input checked="" type="checkbox"/>				a		2			ERS	
210	0	DRN1	% Net Amount 1			<input checked="" type="checkbox"/>				a		2			ERS	
220	0	DRQ1	+/- as to Quantity 1			<input checked="" type="checkbox"/>				a		2			ERS	
230	0	DRV1	Fixed Amount 1			<input checked="" type="checkbox"/>				a		2			ERS	
240	0	DRW1	+/- as to Gross Weight			<input checked="" type="checkbox"/>				a		2			ERS	
250	0	ZMYG	My Group Discount			<input checked="" type="checkbox"/>							3000123			
300	0		Sum Surcharges/Discounts	101	299	<input checked="" type="checkbox"/>										
310	0	PNP0	Net Price			<input checked="" type="checkbox"/>						2	6	3	ERL	
700	0		Net Amount 1			<input checked="" type="checkbox"/>				a	2		2			
850	0	TTX1	Output Tax			<input checked="" type="checkbox"/>				A		10		16	MwS	
899	0	DRD1	Rounding Off 1			<input checked="" type="checkbox"/>						13	16	4	ERS	

Set Pricing Procedure Determination



Set Pricing **Procedure Determination**

In the *Manage Your Solution* app, choose *Configure Your Solution*. Within configuration item *Configure pricing for customers and materials in sales*:

- Navigate to *Set Pricing Procedure Determination*
- Create a new entry for the determination of your pricing procedure

<input type="checkbox"/>	Sales Organi...	Distrib...	Division	Doc...	Cus...	Pricing Proce...	Pricing Procedure
<input checked="" type="checkbox"/>	1010	10	00	A	02	ZMY001	My Procedure
<input type="checkbox"/>	1010	10	00	A	02	ZMY001	My Procedure

Tasks and Roles



Overview of Tasks and Required Roles

Task	Tile(s)	Business Role
Create Custom Logic	Custom Fields and Logic	SAP_BR_ADMINISTRATOR
Set Condition Formula for Alternative Calculation of Condition Amount	Manage Your Solution / Sub-section Configure Your Solution	SAP_BR_BPC_EXPERT
Set Pricing Procedures	Manage Your Solution / Sub-section Configure Your Solution	SAP_BR_BPC_EXPERT
Set Pricing Procedure Determination	Manage Your Solution / Sub-section Configure Your Solution	SAP_BR_BPC_EXPERT

Summary



You should now know:

- The function provided by the alternative calculation for condition amount in document condition
- How to setup the custom logic for alternative calculation of condition amount
- How to leverage the alternative calculation in the business process

© 2018 SAP SE or an SAP affiliate company. All rights reserved.

No part of this publication may be reproduced or transmitted in any form or for any purpose without the express permission of SAP SE or an SAP affiliate company.

The information contained herein may be changed without prior notice. Some software products marketed by SAP SE and its distributors contain proprietary software components of other software vendors. National product specifications may vary.

These materials are provided by SAP SE or an SAP affiliate company for informational purposes only, without representation or warranty of any kind, and SAP or its affiliated companies shall not be liable for errors or omissions with respect to the materials. The only warranties for SAP or SAP affiliate company products and services are those that are set forth in the express warranty statements accompanying such products and services, if any. Nothing herein should be construed as constituting an additional warranty.

In particular, SAP SE or its affiliated companies have no obligation to pursue any course of business outlined in this document or any related presentation, or to develop or release any functionality mentioned therein. This document, or any related presentation, and SAP SE's or its affiliated companies' strategy and possible future developments, products, and/or platform directions and functionality are all subject to change and may be changed by SAP SE or its affiliated companies at any time for any reason without notice. The information in this document is not a commitment, promise, or legal obligation to deliver any material, code, or functionality. All forward-looking statements are subject to various risks and uncertainties that could cause actual results to differ materially from expectations. Readers are cautioned not to place undue reliance on these forward-looking statements, and they should not be relied upon in making purchasing decisions.

SAP and other SAP products and services mentioned herein as well as their respective logos are trademarks or registered trademarks of SAP SE (or an SAP affiliate company) in Germany and other countries. All other product and service names mentioned are the trademarks of their respective companies.

See <http://global.sap.com/corporate-en/legal/copyright/index.epx> for additional trademark information and notices.